

bake

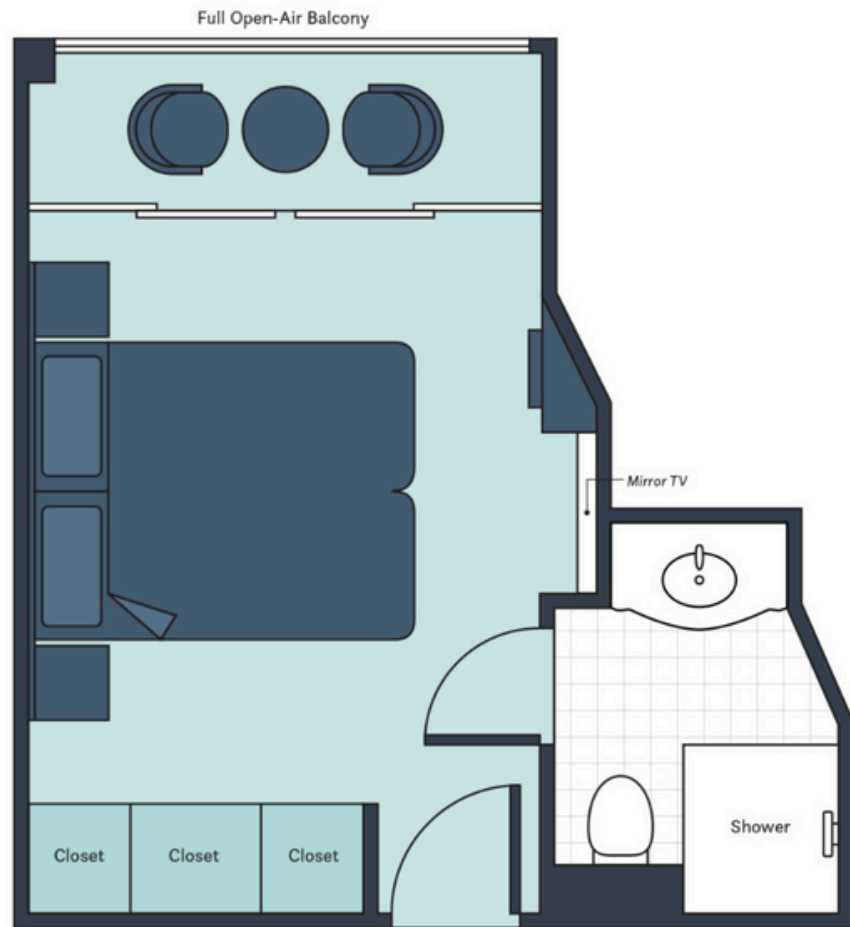
FROM **scratch**[®]



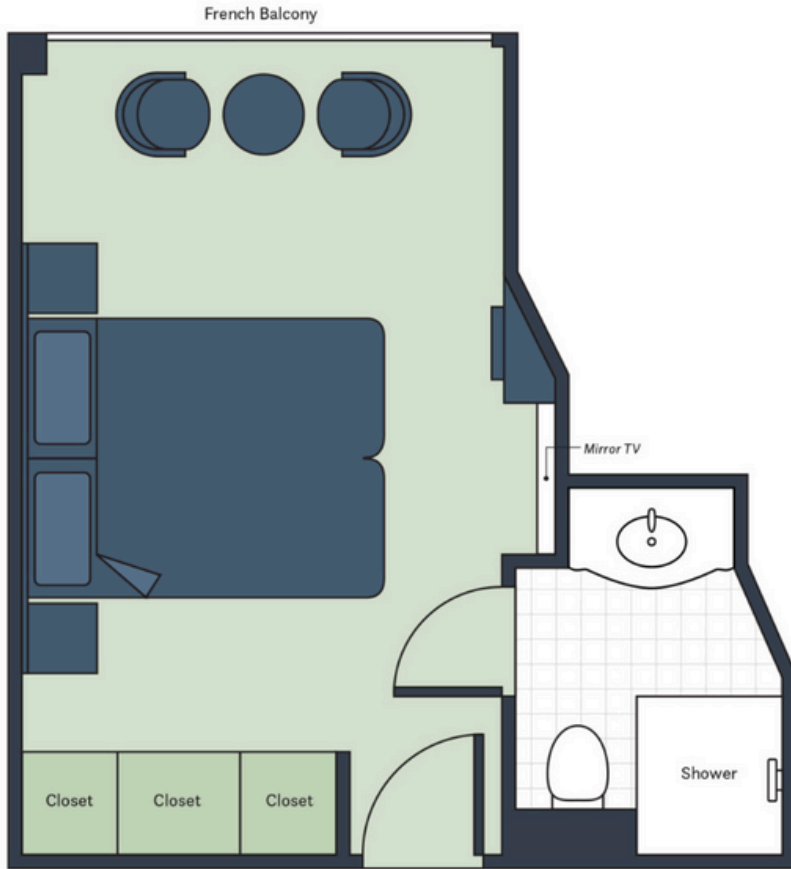
**Danube River Cruise
State Room Options**

Deluxe Balcony

- Lavishly appointed riverview stateroom (194 sq ft - 18 sq m) with an enclosed balcony with floor-to-ceiling windows
- Handcrafted Savoir® Beds of England, built-in closet, hair dryer, safe, individual thermostat, flat-screen TV with infotainment center and satellite
- Marble bathroom with Asprey bath and body products, plush towels, towel warmer, comfortable bathrobes and slippers, heated mirror and backlit magnifying mirror



French Balcony



- Lavishly appointed riverview stateroom (194 sq ft - 18 sq m) with a French balcony
- Handcrafted Savoir® Beds of England, built-in closet, hair dryer, safe, individual thermostat, flat-screen TV with infotainment center and satellite
- Marble bathroom with Asprey bath and body products, plush towels, towel warmer, comfortable bathrobes and slippers, heated mirror and backlit magnifying mirror



Suite



- Lavishly appointed riverview stateroom (305 sq ft - 28.3 sq m) with an enclosed balcony with floor-to-ceiling windows
- Handcrafted Savoir® Beds of England, built-in closet, hair dryer, safe, individual thermostat, flat-screen TV with infotainment center and satellite
- Marble bathroom with Asprey bath and body products, plush towels, towel warmer, bathrobes and slippers, heated mirror and backlit magnifying mirror
- Additional amenities and service include: in-suite butler service; packing and unpacking assistance; in-room breakfast; daily fruit and cookie plate, and an elegant evening snack; Nespresso coffee machine and fine teas; fully stocked mini bar; bottle of wine upon arrival; shoe shine; and free laundry service

